

# QUICK SETUP

**Your System is "ACTIVE" and READY TO USE**

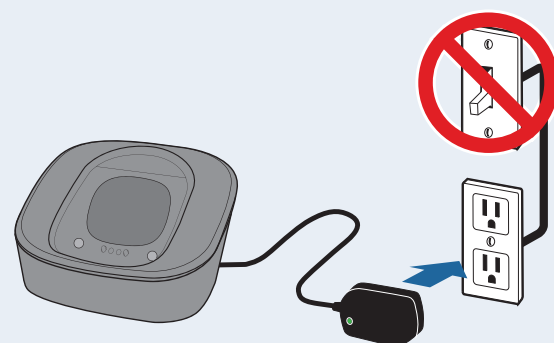
## Micro

Includes a Micro and a cradle charger.



## Plug the power cord into an electrical outlet

The electrical outlet should **NOT** be controlled by a light switch.

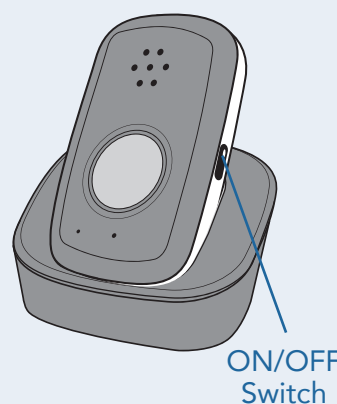


## Place the Micro on the Cradle Charger

The Micro will turn on within a few seconds and the LED indicator around the emergency button will illuminate. It normally takes 30-60 seconds for the Micro to register with the cellular network.

When the Micro is setup correctly and connects to the cellular network, it will announce "system ready".

The LED indicator around the emergency button will illuminate red, indicating that the device still needs charging. When the device is fully charged, the LED indicator will change from red to green and will remain green until the device is removed from the charging cradle. It will take up to 3 hours for the device to be fully charged.



# TESTING

Micro

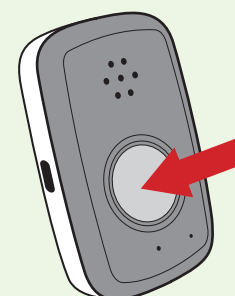
1



## Press and hold the test button

This is located on the side of the device and is labeled with the letter T  
The Micro will instruct you to press the emergency button

2



## Press and hold the emergency button for 2 seconds

The Micro will announce, "Test Call sent to the Emergency Response Center"

3



## If the test was successful...

The Micro will announce, "Thank you for testing your device"

4



## If the test was unsuccessful...

The Micro will announce, "User auto-test failed, please contact Customer Support"

**PLEASE REFER TO THE TECHNICAL SUPPORT NUMBER ON THE INSERT THAT CAME WITH THIS GUIDE FOR ANY QUESTIONS OR CONCERNS.**

*Next, be sure to test your system... see Testing page.*

SRDR-00031 Rev 2.

*If you have not set up your system... see Setup page first.*

SRDR-00031 Rev 2.